

Application, Rating, & Electrical Data	
Application	Combined refrigerator and freezer
Storage Volume (L)	Fridge:206/7.27 Freezer:144/5.08
Temperature Range	Fridge:2°C-8°C Freezer:-10°C--25°C
Default Set Point	Fridge:5°C Freezer:-25°C
Power	115~V/60Hz 220-240~V/50Hz 220-240~V/60Hz
Current	1.8A
Power Cord Length	1.7m
Certification	CE
Door type	Solid door
Application Environment	Non-corrosive, non-flammable, non-explosive
Ambient Operating Temperature	16°C-32°C

Refrigeration	
Refrigeration System	Fridge:Forced air cooling Freezer:Direct cooling
Compressor	Hermetic, fix frequency
Condenser Type	Built in
Expansion Device	Capillary tube
Evaporator Type	Fridge: built in Freezer: shelf evaporator
Defrost Method	Fridge: auto Freezer: manual defrost
Refrigerant	R600a

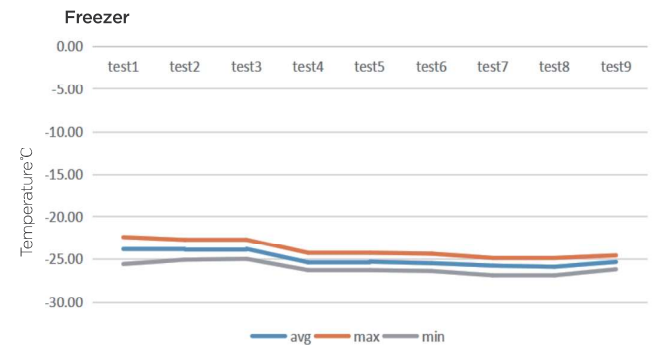
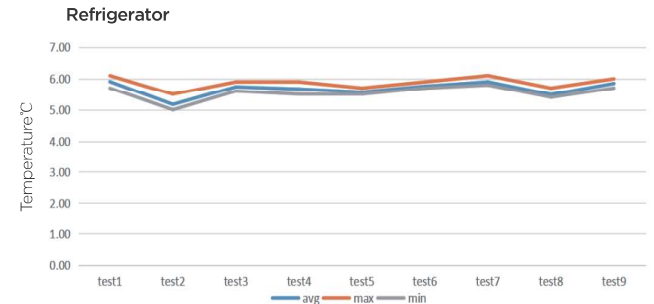
Controller / Configuration Settings	
Display screen	LED
Controller Type	Microprocessor
Security	Lockable door, password protected settings
Control Sensor	NTC
Communication Ports	USB, Remote alarm contacts
Power Failure Alarm	Yes
High/Low Alarms	Yes, fully adjustable
Door Ajar Alarm	Yes
Download	Yes, via USB, PDF
Temperature Log	Yes, download via USB
Battery Back-up	Yes, 15 hr display and alarm back-up Rechargeable 12V, lead acid

Performance Characteristics (normal operating conditions)	
Uniformity (°C)	Fridge: ±1.5°C Freezer: ≤3°C
Recovery to -20°C after 1 min door opening (min)	≤20 mins
Temperature fluctuation (°C)	Fridge: ≤2°C
Energy consumption (kWh/day)	1.2
Noise emission (dB)	45
Pull-down time to -25°C (min)	2h35

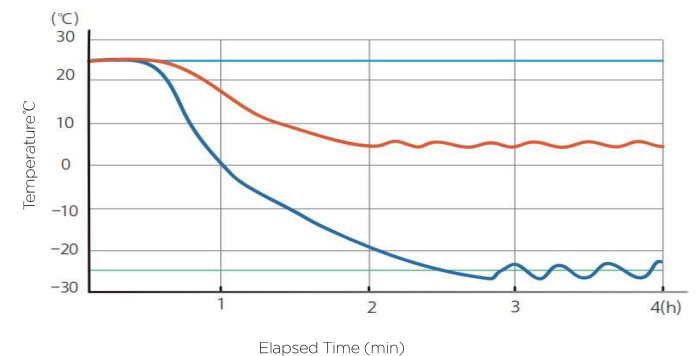
Dimensions and Construction	
Interior (w x h x d)mm	Fridge:600*505*690 Freezer:540*480*560 mm
Exterior (w x h x d)	695*655*1920 mm
Access Port	2 Access Port- for external monitoring probe(s) (25 mm diameter)
shelf	Fridge:3 Freezer:3 drawers 18 kg max capacity
Wheels	4/Omni-directional
Net Weight	106 kg
Gross Weight	118 kg

All performance data from 350L combined refrigerator and freezer, 25 ambient, -25°C

Uniformity



Cooling Speed



Typical Temperature Map

Ref	test 1	test 2	test 3	test 4	test 5	test 6	test 7	test 8	test 9
Avg	5.91	5.17	5.74	5.67	5.57	5.76	5.90	5.49	5.85
Max	6.10	5.50	5.90	5.90	5.7	5.90	6.10	5.70	6.00
Min	5.70	5.00	5.60	5.50	5.5	5.70	5.80	5.40	5.70

Fre	test 1	test 2	test 3	test 4	test 5	test 6	test 7	test 8	test 9
Avg	-23.86	-23.92	-23.84	-25.40	-25.32	-25.50	-25.78	-25.91	-25.35
Max	-22.40	-22.70	-22.70	-24.30	-24.30	-24.40	-24.90	-24.90	-24.60
Min	-25.60	-25.10	-25.00	-26.30	-26.30	-26.40	-26.90	-26.90	-26.20

